

Noosa Sediment Accumulation Study

A Community–Science Collaboration

Noosa Estuary & Lakes:

Our place is unique. The ecological balance is fragile, and needs our support. The NOOSA RIVER is the lifeblood of our community. It's a place to play, eat, work & live... It's ours, it has **SUBSTANTIAL VALUE to the local economy** and worth investing in, to ensure our unique River and Lakes are resilient and plentiful into the future.

The Problem...

Recent scientific studies highlighted the problem of EXCESS FINE SEDIMENT in the estuary, which can smother important estuarine habitats such as seagrass and shellfish beds. These habitats are essential places for baby prawns, fish & their food. The breakdown of nutrients and decaying organic matter in the fine sediment can alter the benthic community, and also result in a lack of oxygen on the bottom, creating a dead zone. The figure below shows areas where fine sediment is currently found in the estuary and lakes.

Knowing how much fine sediment is in the system and where it accumulates, helps target restoration campaigns, contributing to protecting and enhancing our unique and valuable estuarine ecosystems

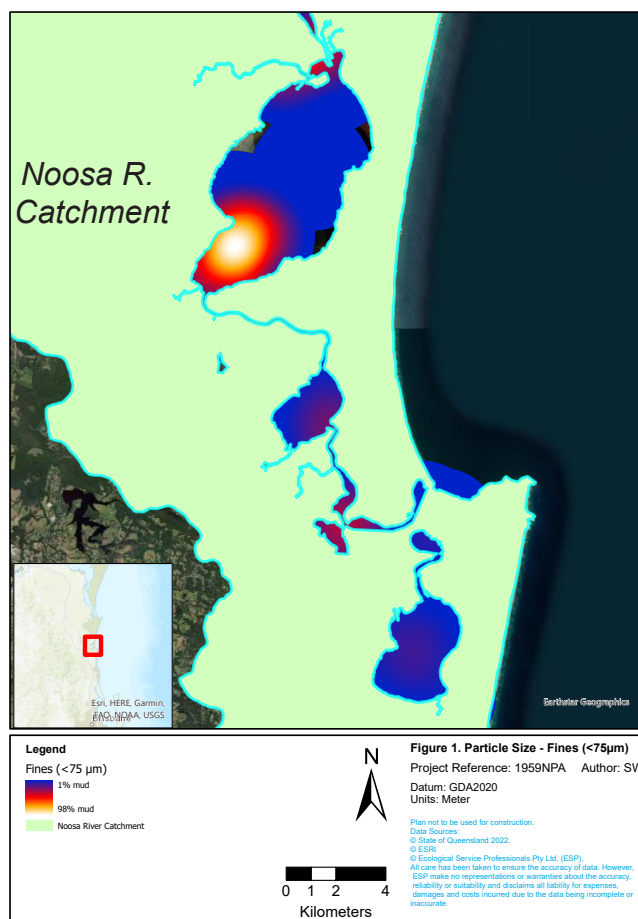
What are we doing?

We are engaging with our community and working with scientists to find out how BIG this problem is.

We are measuring accumulation of sediment by deploying devices into the estuary and lakes. These devices collect sediment and we will be checking them and collecting them every 2-3 months.

Our science collaborators will use this information and help us calculate and map how much sediment is accumulating throughout the estuary.

We will use this information to target the most effective management and restoration responses in the areas that matter most to rebuild a resilient riverine ecosystem.



How can you help?

JOIN US ON THE WATER for some science in action. Your work will directly contribute to understanding how our estuary works, the pressures it faces now and inform restoration and protection measures to support a resilient ecosystem into the future.

If this sounds great, and you would like to be involved, contact: Bryan Walsh at NPA
email: office@noosaparks.org.au OR visit us as the Information Centre